

6335 FERRIS SQUARE, SUITES C & D, SAN DIEGO, CA 92121



BUILT TO INSPIRE

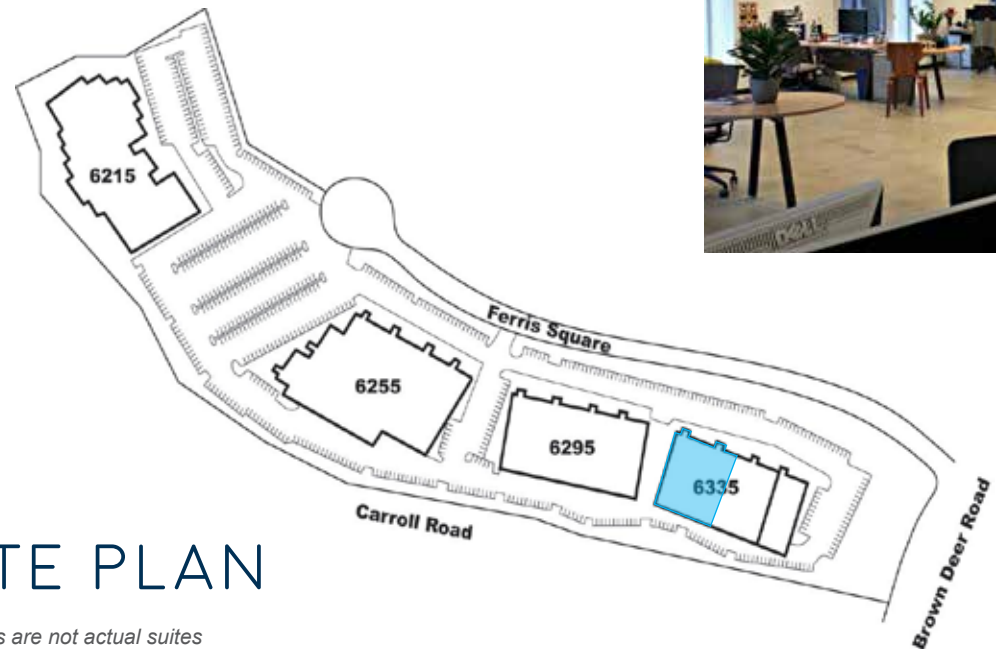
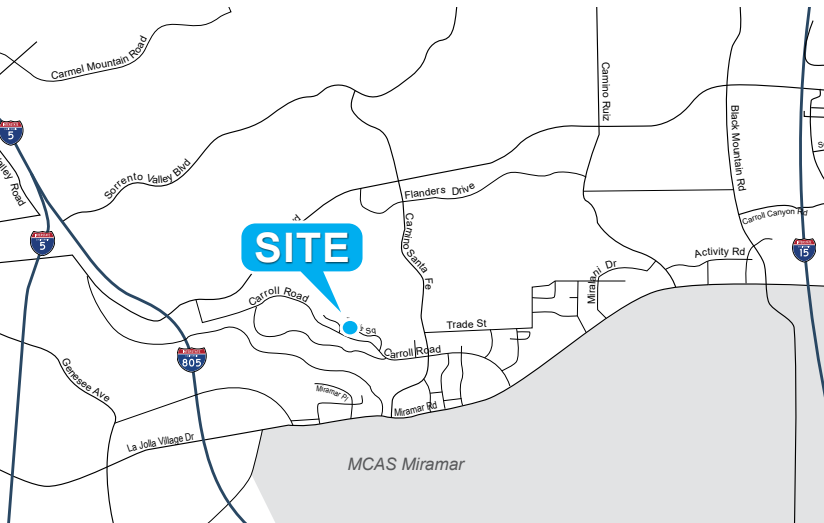
- » 12,194 SF for lease (Divisible)
- » Brand new spec suites
- » Mix of private and open office area
- » 22' clear height
- » Grade level truck doors
- » Corporate image
- » Prime location within minutes of I-8, I-5 & I-15
- » Pride of ownership property
- » Available June 1, 2018
- » Lease Rate: \$1.20 - \$1.30 NNN

SUITE C
6,272 SF

SUITE D
5,922 SF



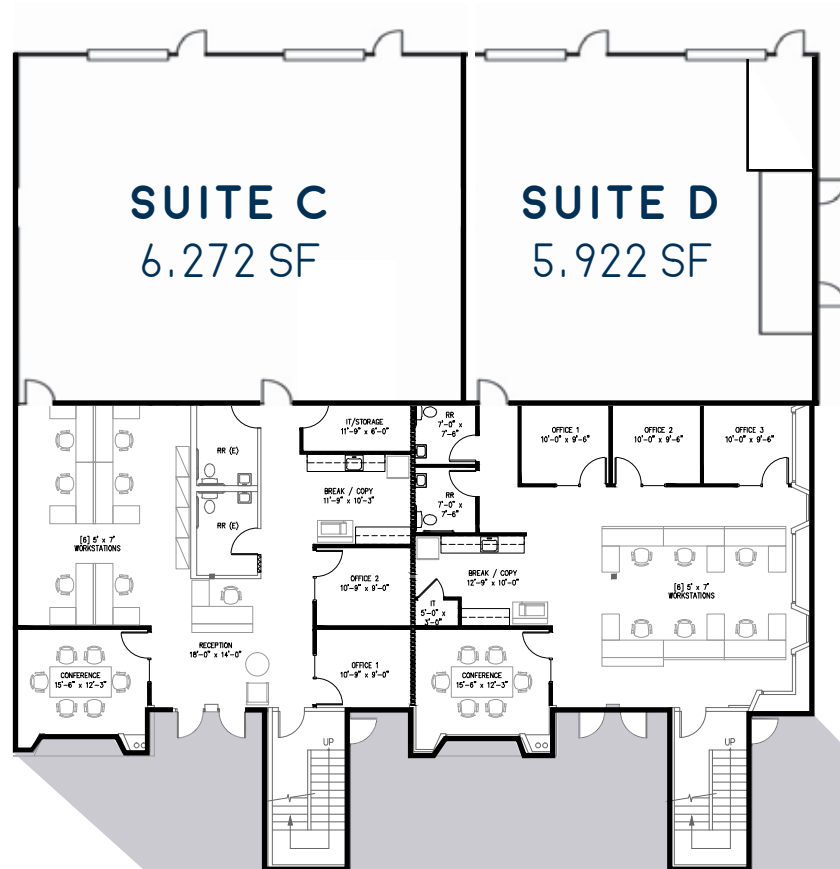
BRAND NEW CREATIVE FLEX SUITES



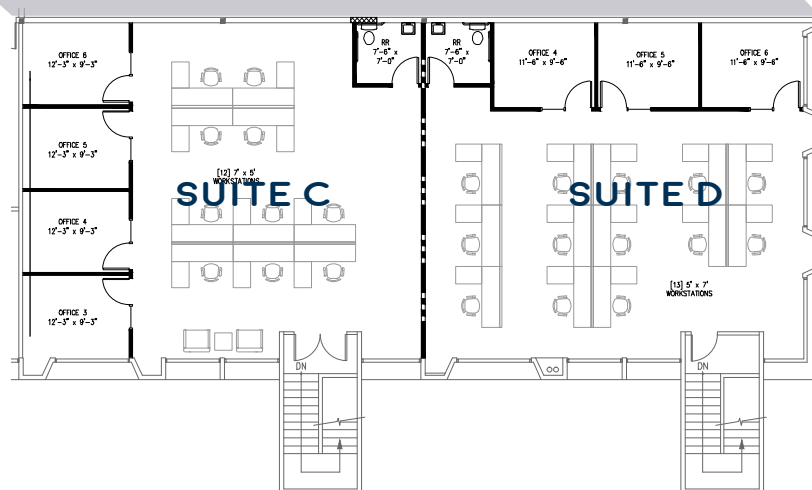
SITE PLAN

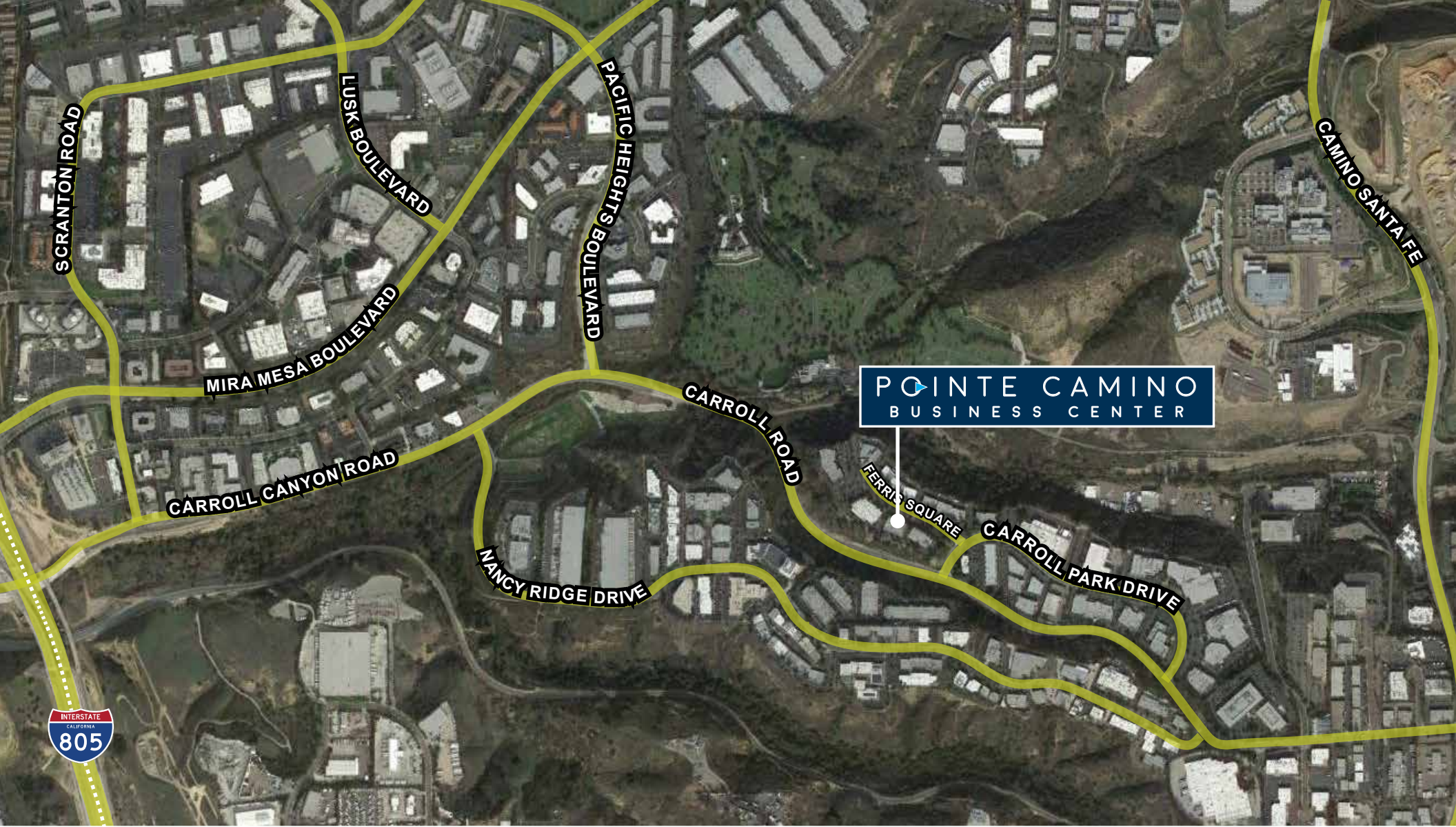
**Images are not actual suites*

FIRST FLOOR



SECOND FLOOR





POINTE CAMINO
BUSINESS CENTER

INTERSTATE
CALIFORNIA
805