

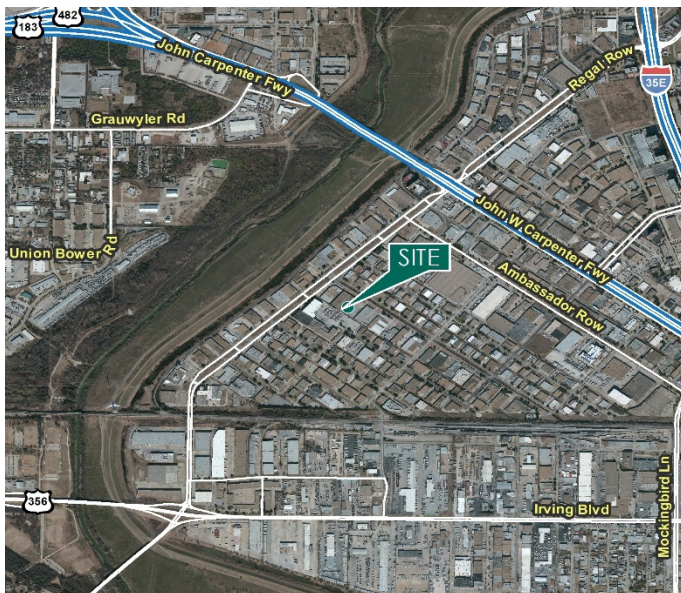
# 95,549 SF

## Industrial Space For Lease



## Prologis Stemmons

9203 Chancellor Row  
Dallas, TX 75247 USA



### LOCATION

- Easy access to major highways including I-35E (1.5 mi.), TX-183 (1.3 mi.) and TX-12 (3 mi.)
- 11 minutes to Love Field

### FACILITY

- 95,549 sf available
- 4,250 sf office
- 24' clear height
- 33' 6" x 33' 6" typical bay spacing
- 5 (10' x 10') overhead dock doors with manual levelers
- 4 (10' x 10') overhead dock door with ramp
- 1 oversized grade door
- 4 overhead ventilation doors

### ADVANTAGES AND AMENITIES

- Stand alone building
- Secured truck court
- Power 240V 3-phase 700 amps

# 95,549 SF

Industrial Space For Lease

