

2075 PIONEER

2075 South Pioneer Road, Salt Lake City, Utah 84104

FOR LEASE

18,500 SF



PROPERTY HIGHLIGHTS

SUITE A

- 5,600 SF warehouse
- 3,400 SF office
- Two ground level doors
- 12'x13' and 18'x16'
- Clear height: 28'
- 480+ volt
- Yard space available

SUITE B

- 5,700 SF warehouse
- 3,800 SF office
- Three ground level doors
- Two 8'x10' and 12'x14'
- Clear height: 18'
- Radiant heat
- 480+ volt
- 28' column spacing
- Yard space available

- Excellent location
- Immediate access to SR-201 and I-215
- Many surrounding amenities
- Freeway frontage
- Available immediately

376 East 400 South, Suite 120 | Salt Lake City, Utah 84111
801.578.5555 | www.ngacres.com

2075 PIONEER

2075 South Pioneer Road, Salt Lake City, Utah 84104

FOR LEASE

18,500 SF

SUITE A



SUITE B



376 East 400 South, Suite 120 | Salt Lake City, Utah 84111
801.578.5555 | www.ngacres.com

2075 PIONEER

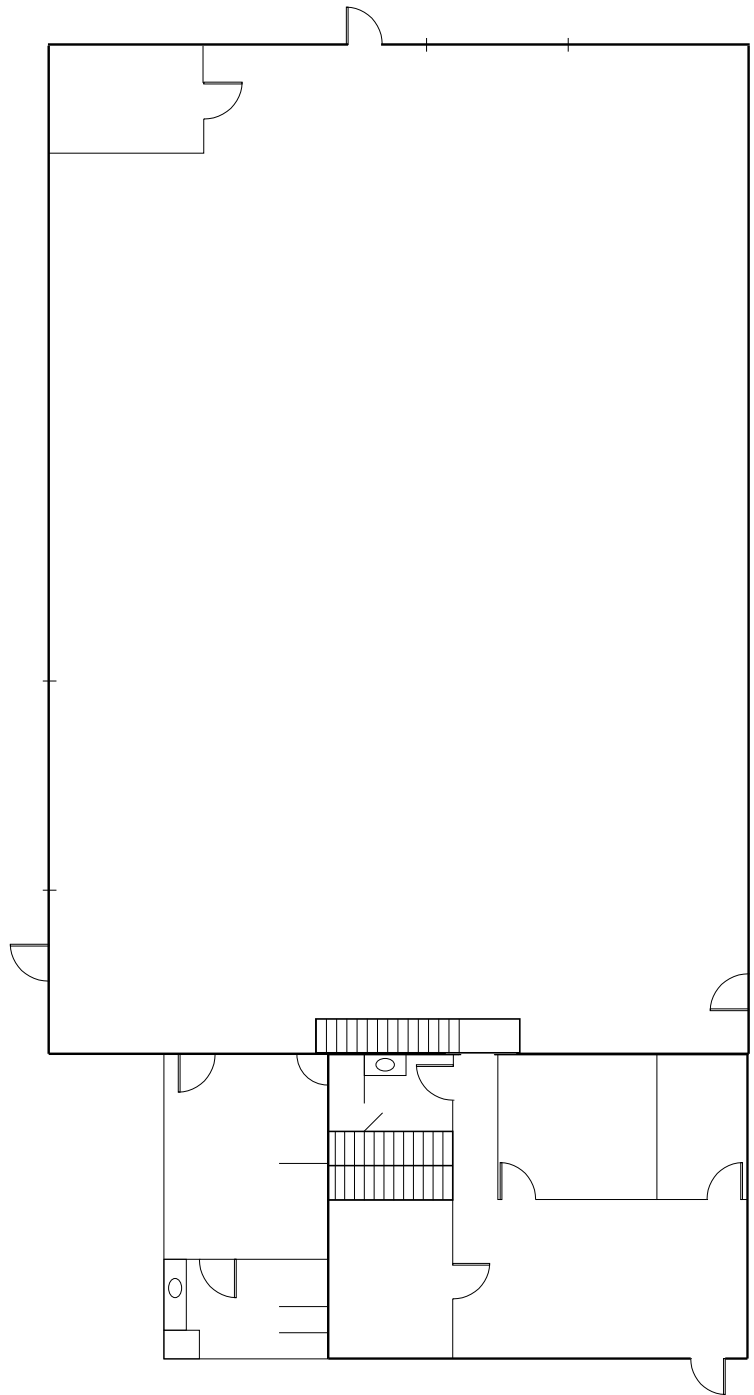
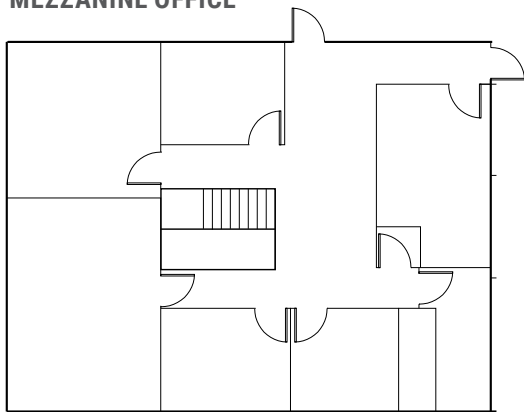
2075 South Pioneer Road, Salt Lake City, Utah 84104

FOR LEASE

18,500 SF

SUITE A (WEST)

MEZZANINE OFFICE



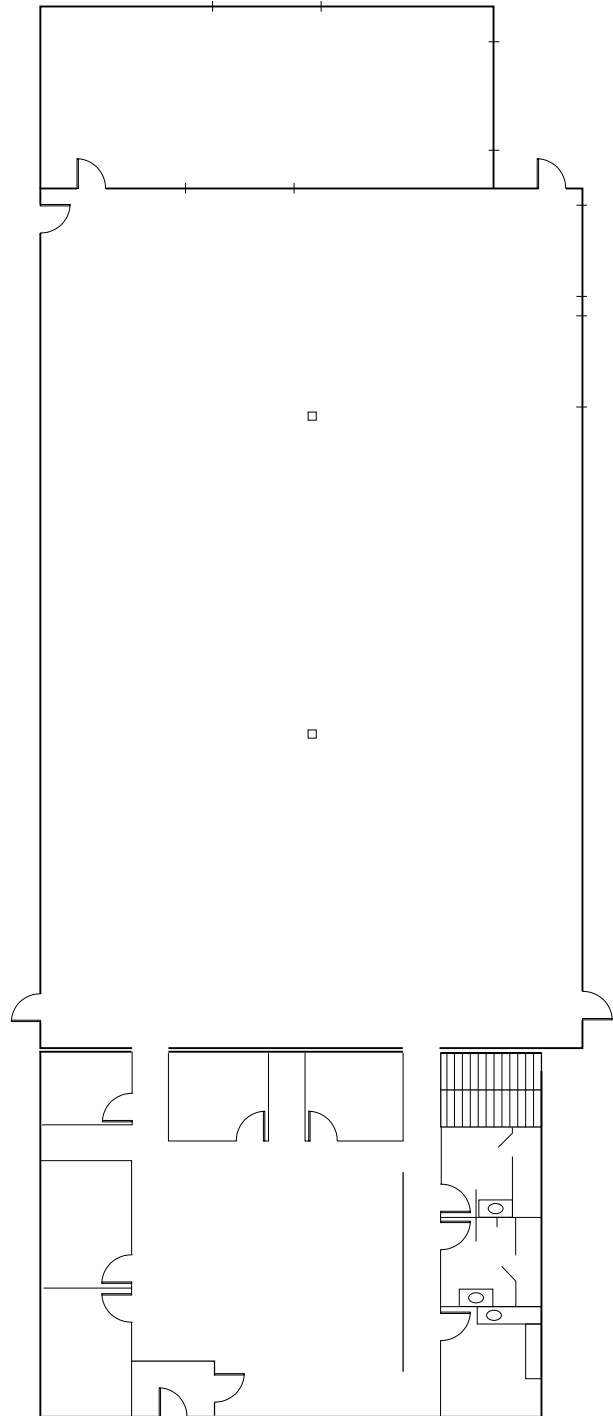
2075 PIONEER

2075 South Pioneer Road, Salt Lake City, Utah 84104

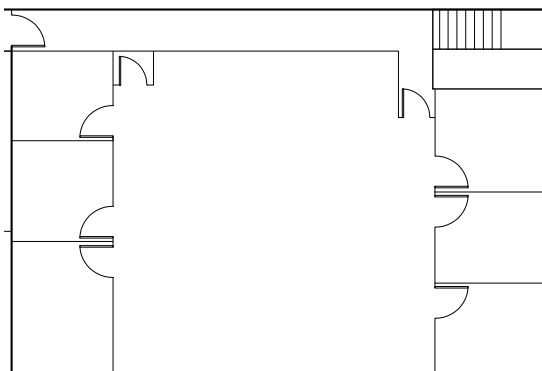
FOR LEASE

18,500 SF

SUITE B (EAST)



MEZZANINE OFFICE



2075 PIONEER

2075 South Pioneer Road, Salt Lake City, Utah 84104

FOR LEASE

18,500 SF



Pioneer Road



**SUITE A
YARD SPACE**

**SUITE A
9,000 SF**

**SUITE B
9,500 SF**

**SUITE B
YARD SPACE**

376 East 400 South, Suite 120 | Salt Lake City, Utah 84111
801.578.5555 | www.ngacres.com

2075 PIONEER

2075 South Pioneer Road, Salt Lake City, Utah 84104

FOR LEASE

18,500 SF



376 East 400 South, Suite 120 | Salt Lake City, Utah 84111
801.578.5555 | www.ngacres.com