

Commercial Real Estate for Southwest Dallas

# For Lease

**Duncanville Industrial Park**

**1126 Explorer Street, Duncanville**



**Lease Rate:**

\$6.50 SF

**Zoning:**

Light Industrial

**Location:**

Mapasco 72-E

Easy Access to I-20  
and Hwy 67  
Located in Duncanville  
Industrial Park

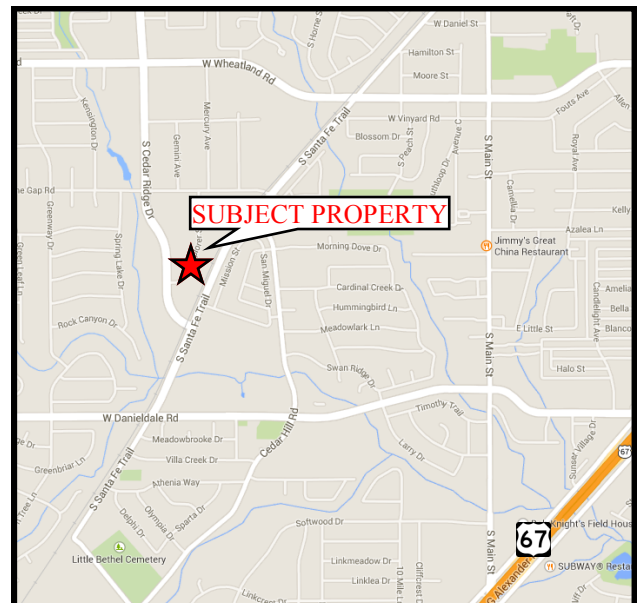
## BUILDING FEATURES:

- Sprinklered
- Insulated TPO roof
- T8 energy efficient lighting
- Dock-high & grade level overhead doors
- 16' Front wall
- Concrete parking lot
- Approx. 2.5 miles south of I-20

## AVAILABILITY:

Suite F/G    6,000 SF    \$6.50 SF    \$3,250.00 Mo

Warehouse—owner will finish out to suit tenant's needs. 2 dock, 2 rear grade level



Commercial Real Estate for Southwest Dallas

# For Lease

Duncanville Industrial Park

1126 Explorer Street, Duncanville

Reception in built out offices in Suite H



Exterior—Suite A



Kitchenette in built out offices in Suite H



Warehouse

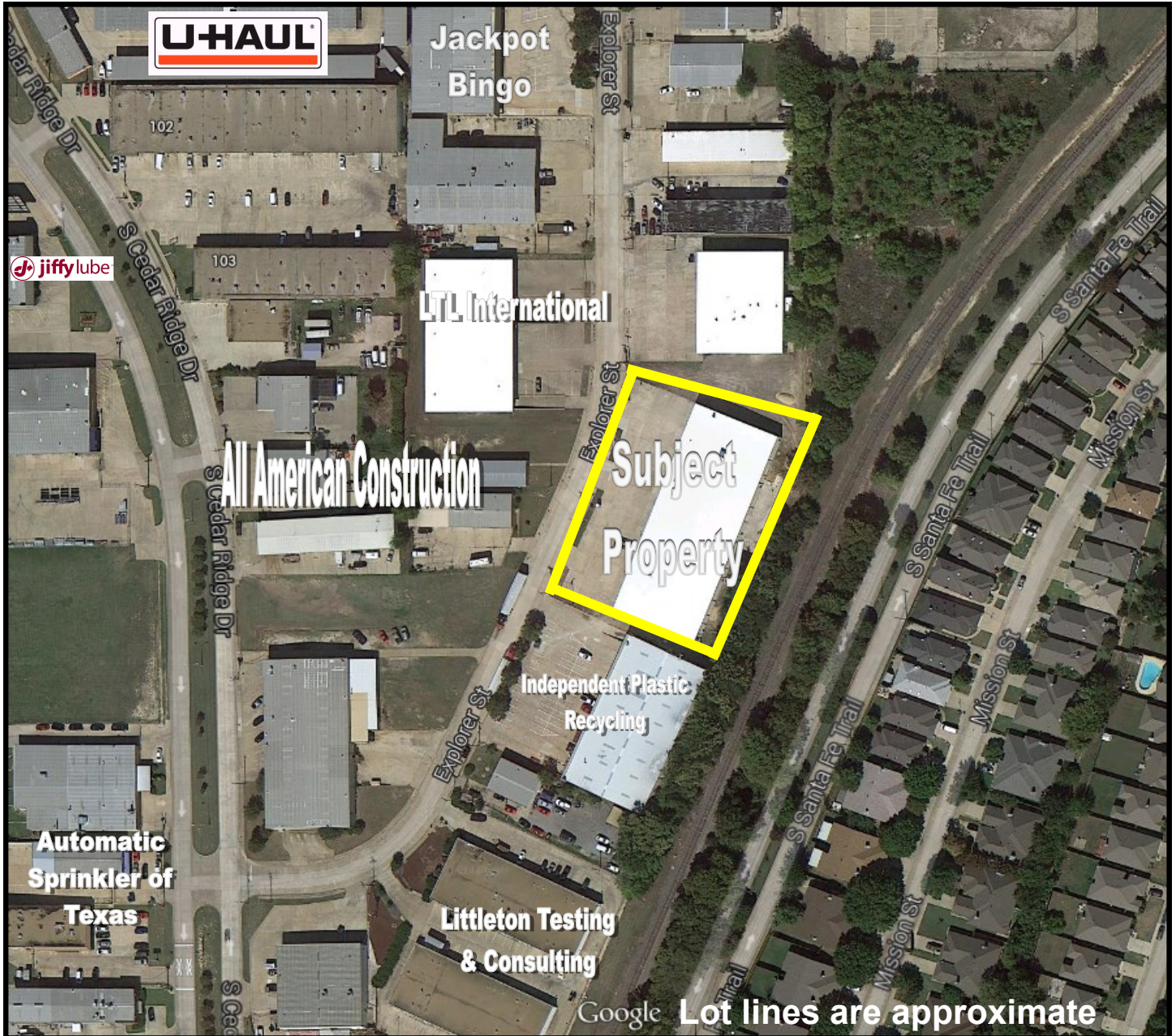


Commercial Real Estate for Southwest Dallas

# For Lease

Aerial

## 1126 Explorer Street, Duncanville



Commercial Real Estate for Southwest Dallas

# For Lease

Area Retailers

## 1126 Explorer Street, Duncanville



Commercial Real Estate for Southwest Dallas

**For Lease**

**Map**

**1126 Explorer Street, Duncanville**

