

FOR LEASE

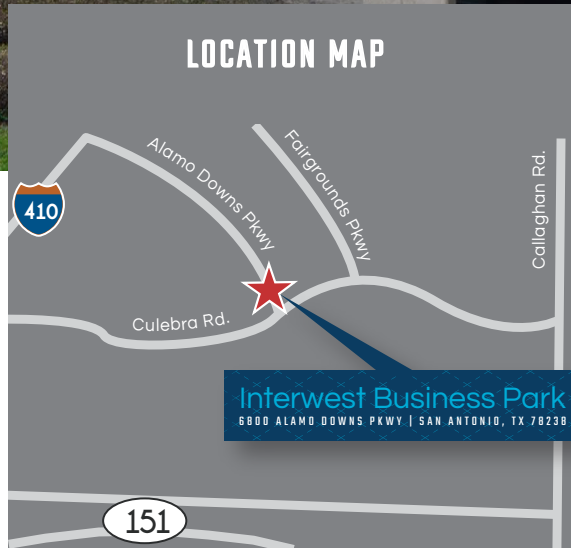


**PROPERTY INFORMATION**

**Interwest Business Park** consists of four (4) industrial buildings totaling to approximately 219,244 square feet. The project is strategically located in the Alamo Downs Business Park on Alamo Downs Pkwy, just off Loop 410 in Northwest San Antonio.

The buildings offer a 20 foot clear height as well as both grade level and dock high loading.

**LOCATION MAP**

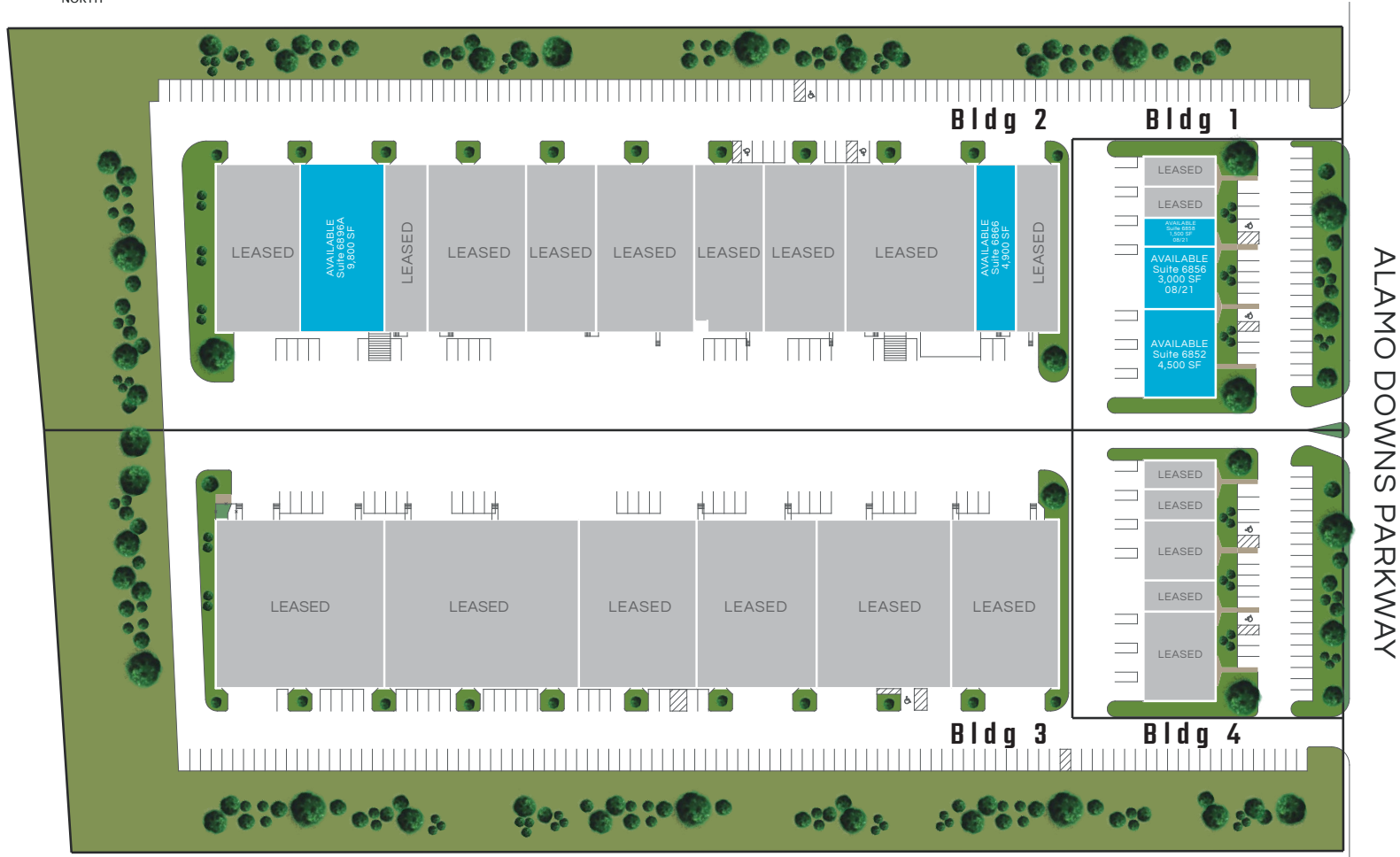


**AVAILABLE**

| <b>Bldg 1</b> |          |                |
|---------------|----------|----------------|
| 6852:         | 4,500 SF | \$9.25/SF NNN  |
| 6856:         | 3,000 SF | \$9.50/SF NNN  |
| 6858:         | 1,500 SF | \$10.00/SF NNN |
| <b>Bldg 2</b> |          |                |
| 6866:         | 4,900 SF | \$6.25/SF NNN  |
| 6896A:        | 9,800 SF | \$6.00/SF NNN  |

**2020 OPEX (Est.):** \$2.84/SF

# PROPERTY SITE PLAN



# Interwest Business Park

6800 ALAMO DOWNS PKWY | SAN ANTONIO, TX 78238

FOR LEASE

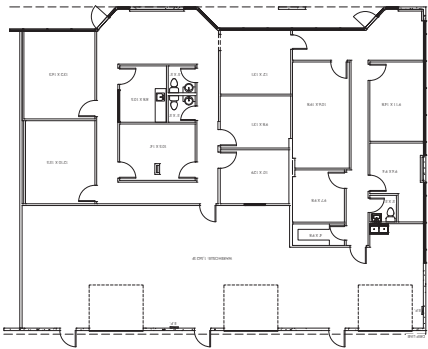
# Interwest Business Park

6800 ALAMO DOWNS PKWY | SAN ANTONIO, TX 78238

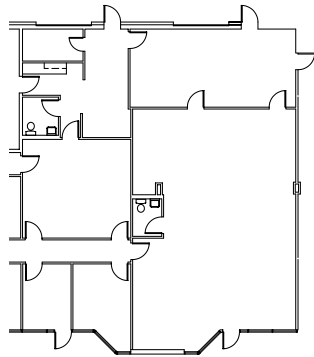
FOR LEASE

## AVAILABLE FLOORPLANS

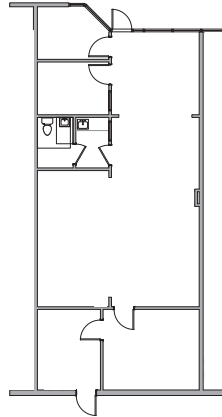
**Bldg 1** Suite 6852  
4,500 SF



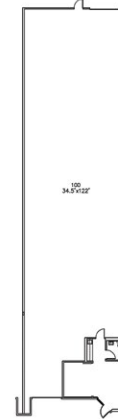
**Bldg 1** Suite 6856  
3,000 SF



**Bldg 1** Suite 6858  
1,500 SF



**Bldg 2** Suite 6866  
4,900 SF



**Bldg 2** Suite 6896A  
9,800 SF

