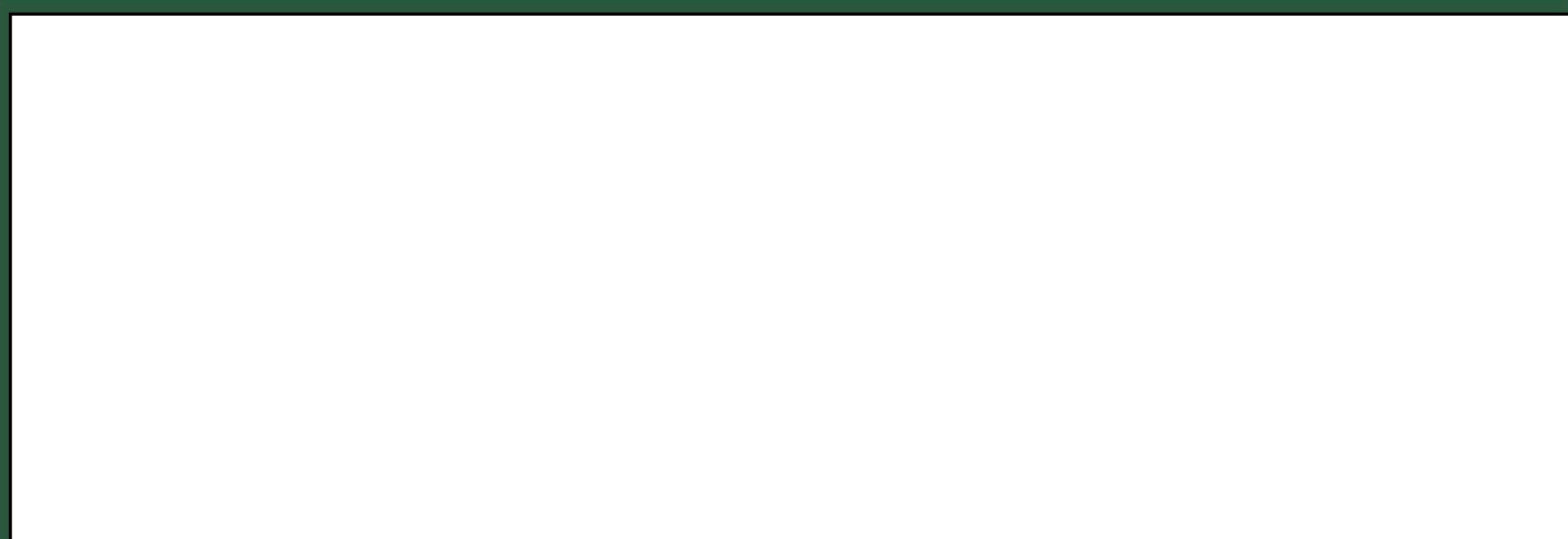


1555 4th AVE S. BUILDING

est. 1924





Current Retail Space containing about 5,000 SF



Current 1st Floor Warehouse Space containing about 13,000 SF

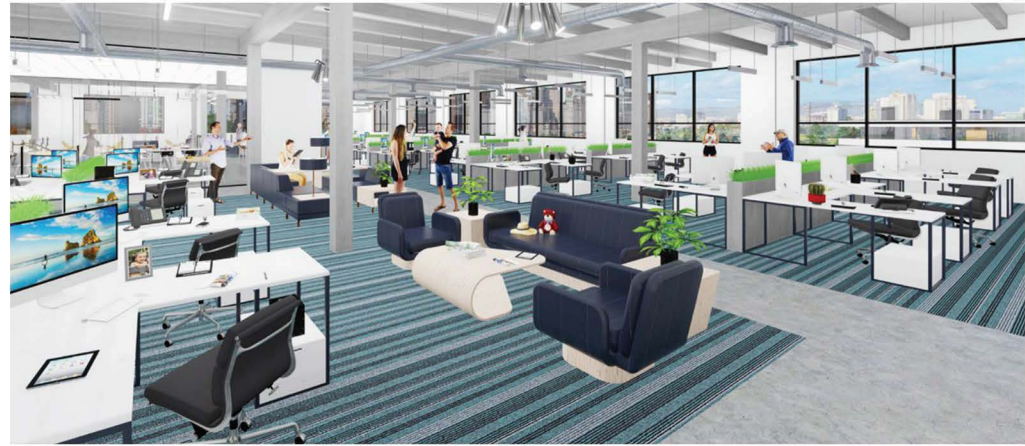


Current 2nd Floor Warehouse Space containing about 11,000 SF



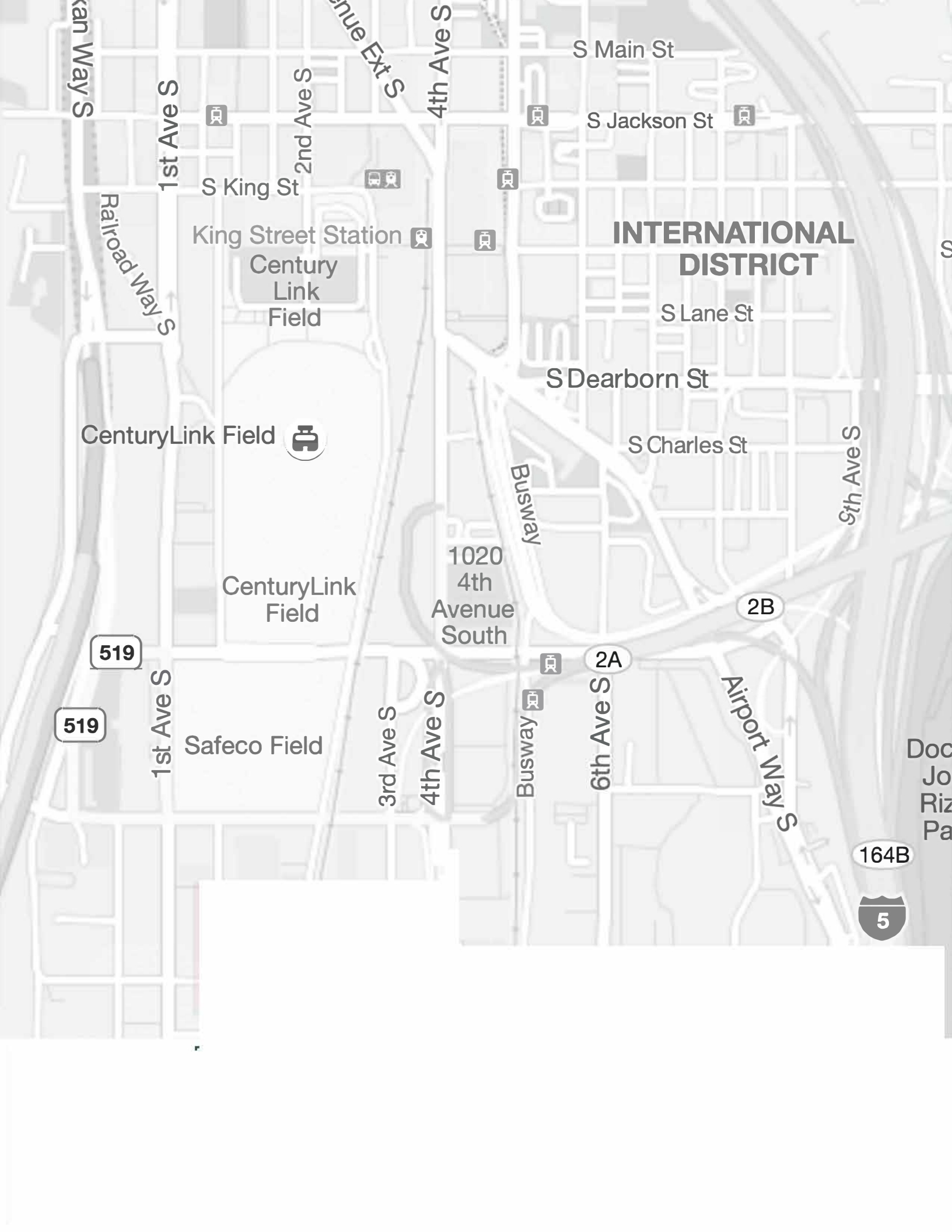
Current 2nd Floor Office Space containing about 7,000 SF

These renderings have been created by building owners in conjunction with an architectural firm to showcase tenant improvements that can be made to the building in order to transform it into a more customized co-working space.



“IMAGINE A MODERNIZED CO-WORKING SPACE TO FIT THE NEEDS OF TODAY’S GROWING COMPANIES.”

- 36,407 SQFT OF FLEXIBLE SPACE
- EXTENDED CEILING HEIGHT (13-16 FT)
- ON-SITE PARKING (30)
- CLOSE PROXIMITY TO LIGHT RAIL
- EASY ACCESS TO FREEWAYS
- LARGE SIGNAGE AVAILABLE
- DOCK HIGH GRADE LOADING



INTERNATIONAL DISTRICT

King Street Station
Century Link Field

CenturyLink Field

CenturyLink Field

Safeco Field

1020 4th Avenue South

164B



519
519

2A

2B