

FOR LEASE

Tsue Chong Building

800 S WELLER STREET, SEATTLE, WA



Property Highlights



**HIGHLY VISIBLE
CENTRAL BUSINESS
DISTRICT LOCATION**



**THREE-STORY
BUILDING**



**FREIGHT ELEVATORS
UP TO 7,500 LBS**



**PARKING
AVAILABLE**



**15' CEILING
HEIGHT**



**WALK-IN
COOLER**



**FORKLIFT
ACCESSIBLE**

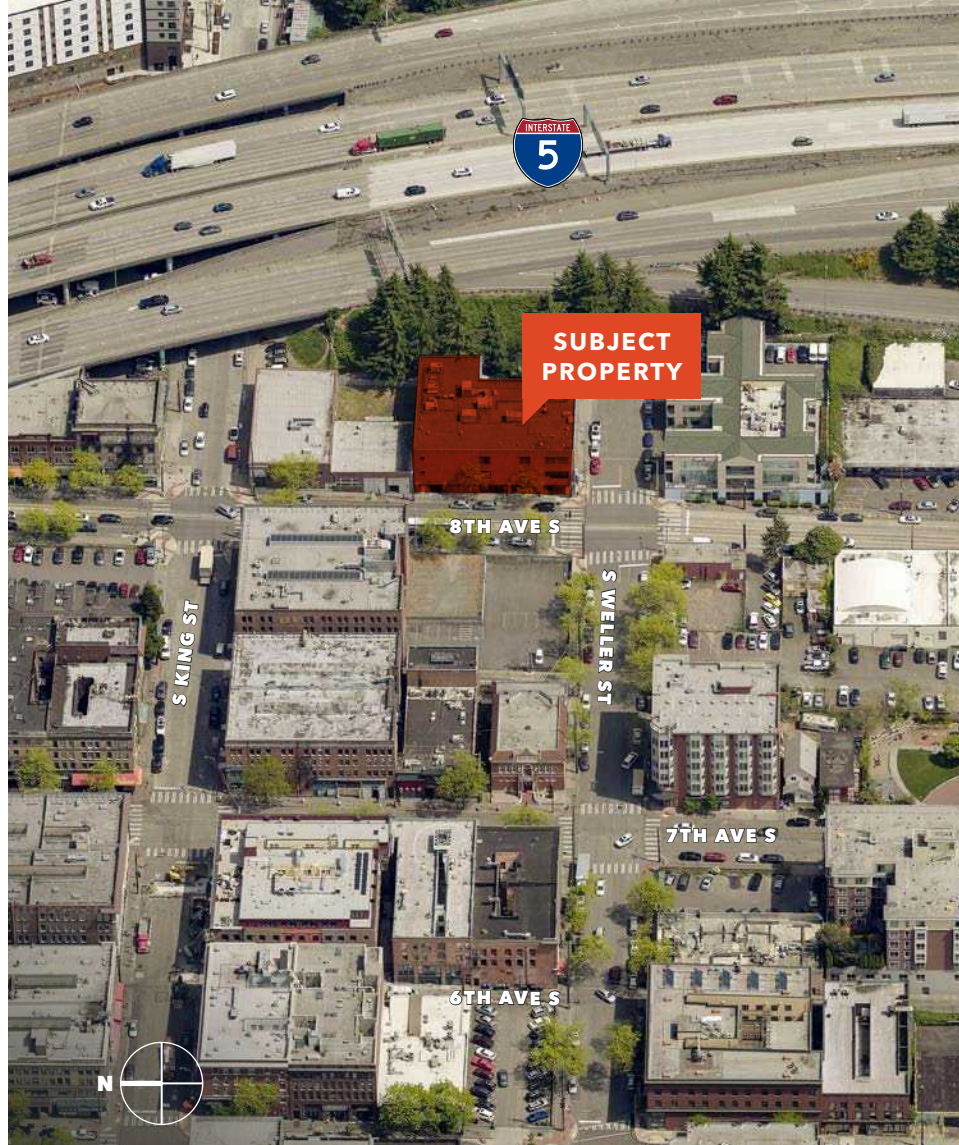


**GRADE & DOCK
LEVEL LOADING**

FOR LEASE

Tsue Chong Building

800 S WELLER STREET, SEATTLE, WA



FOR LEASE

Tsue Chong Building

800 S WELLER STREET, SEATTLE, WA



FOR LEASE

Tsue Chong Building

800 S WELLER STREET, SEATTLE, WA



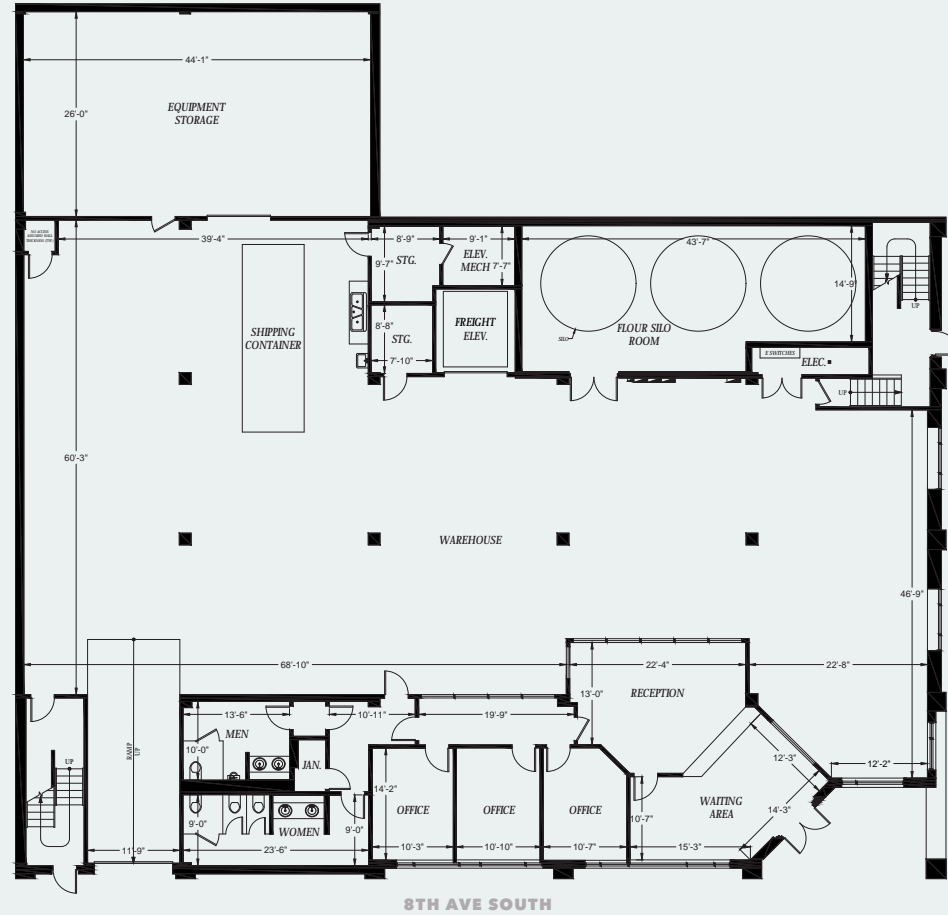
FLOOR 1

10,819 SF

GROSS AREA

CONTACT

AGENTS FOR PRICING



FOR LEASE

Tsue Chong Building

800 S WELLER STREET, SEATTLE, WA



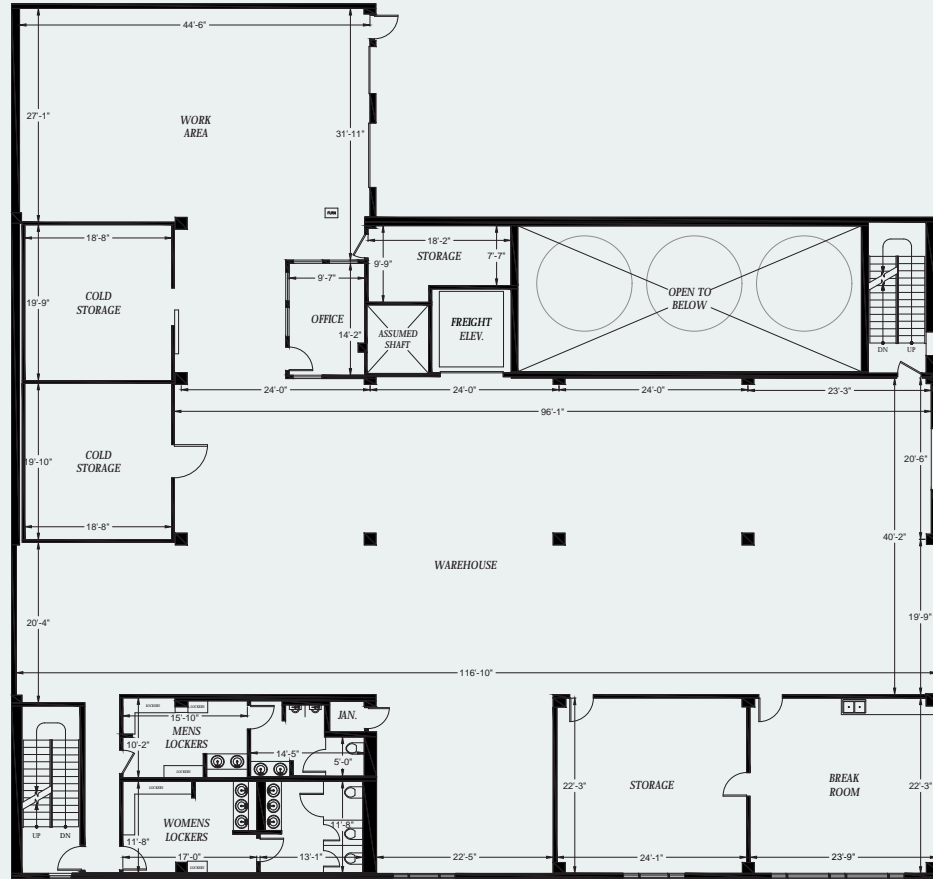
FLOOR 2

10,316 SF

GROSS AREA

CONTACT

AGENTS FOR PRICING



SOUTH WELLER ST

8TH AVE SOUTH



FOR LEASE

Tsue Chong Building

800 S WELLER STREET, SEATTLE, WA



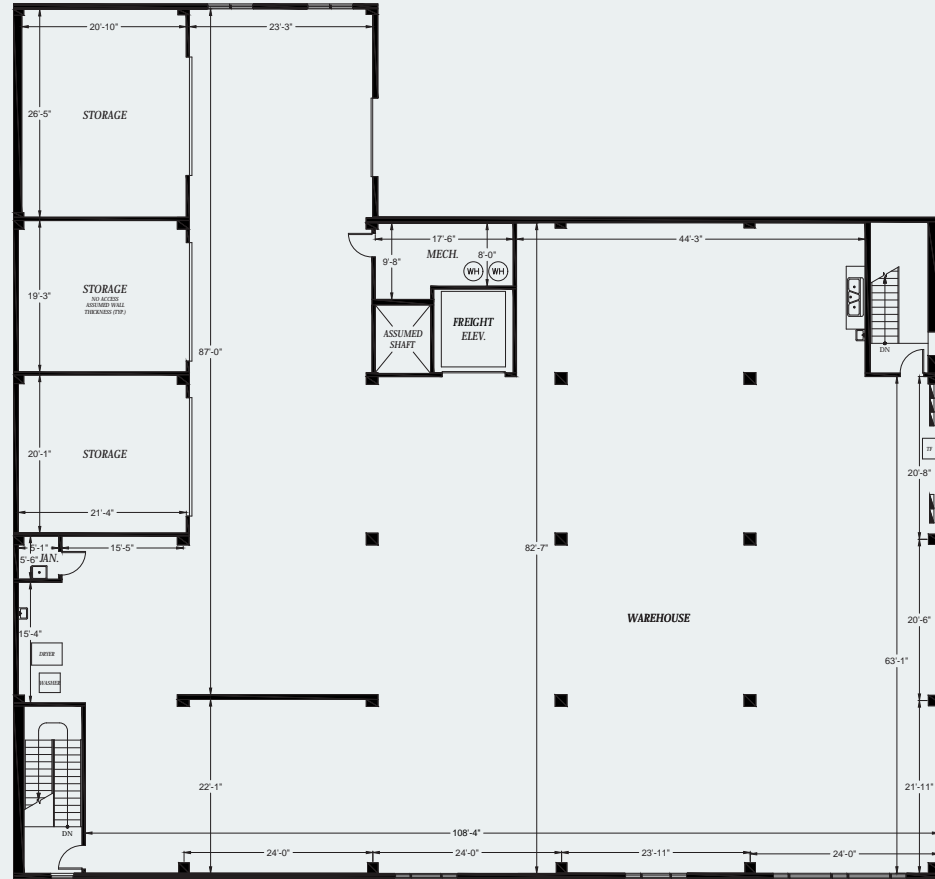
FLOOR 3

11,170 SF

GROSS AREA

CONTACT

AGENTS FOR PRICING



SOUTH WELLER ST

