




FOR LEASE

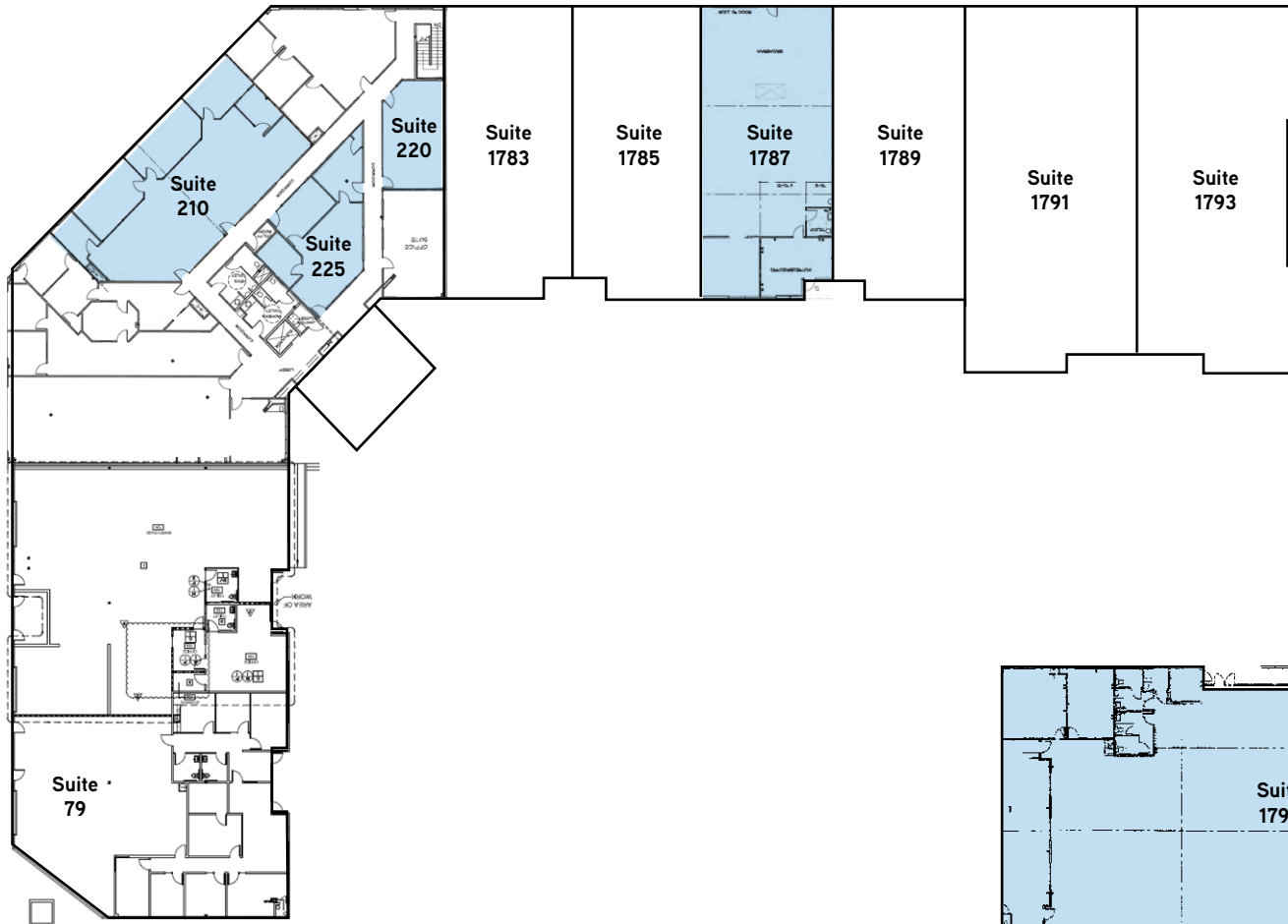
Vineyard Business Park | Office and Warehouse Space



1773-1799 VINEYARD DRIVE | ANTIOCH, CA
±589 TO ±10,717 SF AVAILABLE

- › Antioch's premier business park in a campus style setting
 - › Wide range of uses supported including industrial, warehouse, recreation and service commercial
 - › Flexible unit sizes ranging from ±200 SF to ±10,000 SF
 - › Easy access to Highway 4 & 160
 - › Minutes from the new 2 million square foot Contra Costa Logistics Center
 - › Class A office improvements with substantial renovations recently completed
- 

SITE PLAN



Availability

Suite 210 | ±2,619 SF
Suite 220 | ±589 SF
Suite 225 | ±1,046 SF
Suite 1787 | ±3,080 SF
Suite 1799 | ±10,717 SF

Available

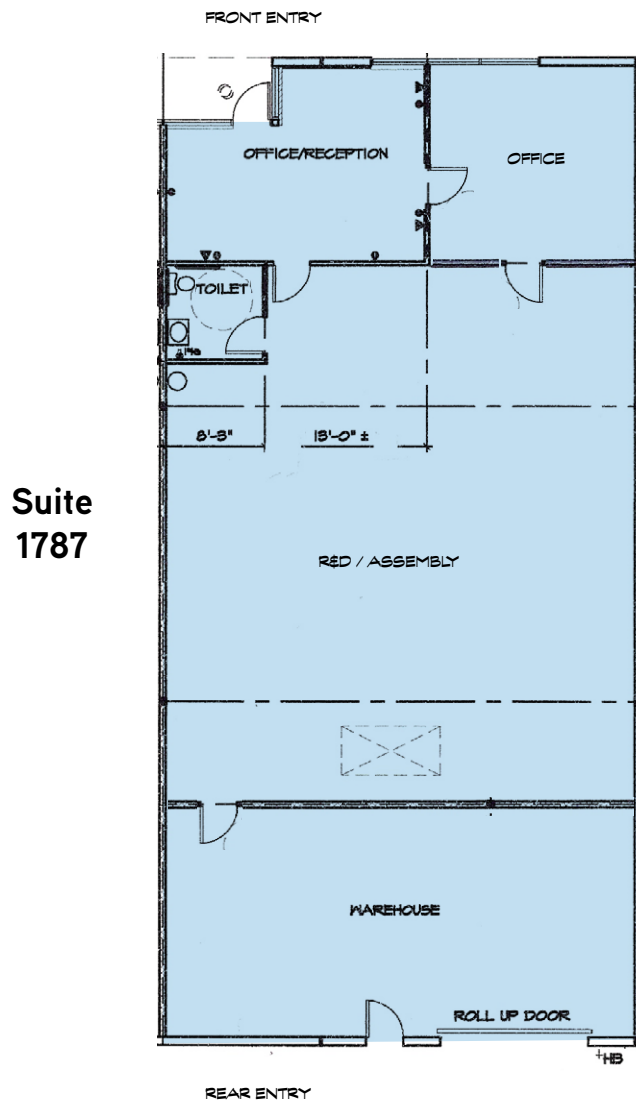
FOR LEASE > VINEYARD BUSINESS PARK | OFFICE AND WAREHOUSE SPACE

LOCATION OVERVIEW



FOR LEASE > VINEYARD BUSINESS PARK | OFFICE AND WAREHOUSE SPACE

FLOOR PLAN



**Suite
1787**

Availability

Suite 210 | ±2,619 SF
Suite 220 | ±589 SF
Suite 225 | ±1,046 SF
Suite 1787 | ±3,080 SF
Suite 1799 | ±10,717 SF

Available

Suite Highlights

- > Large grade level door
- > 16'-18' clear height
- > 480v heavy power
- > Extensive glass-line
- > Beautiful office improvements

FLOOR PLAN



Availability

Suite 210 | ±2,619 SF
Suite 220 | ±589 SF
Suite 225 | ±1,046 SF
Suite 1787 | ±3,080 SF
Suite 1799 | ±10,717 SF

Available

Suite Highlights

- > Class A office improvements
- > Move-in ready
- > Executive suites also available
- > 2nd floor with view
- > Common area restrooms with janitorial services

Available

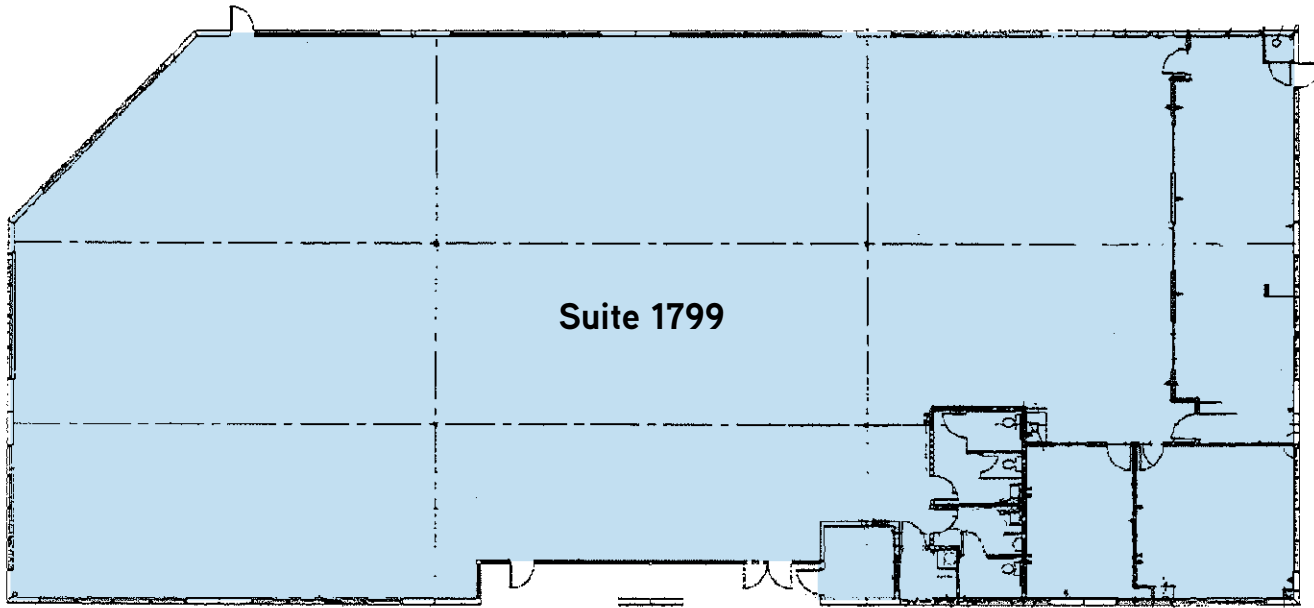
FOR LEASE > VINEYARD BUSINESS PARK | OFFICE AND WAREHOUSE SPACE

FLOOR PLAN



Availability

Suite 210 | ±2,619 SF
Suite 220 | ±589 SF
Suite 225 | ±1,046 SF
Suite 1787 | ±3,080 SF
Suite 1799 | ±10,717 SF



Available



FOR LEASE > VINEYARD BUSINESS PARK | OFFICE AND WAREHOUSE SPACE

PROPERTY PHOTOS

