

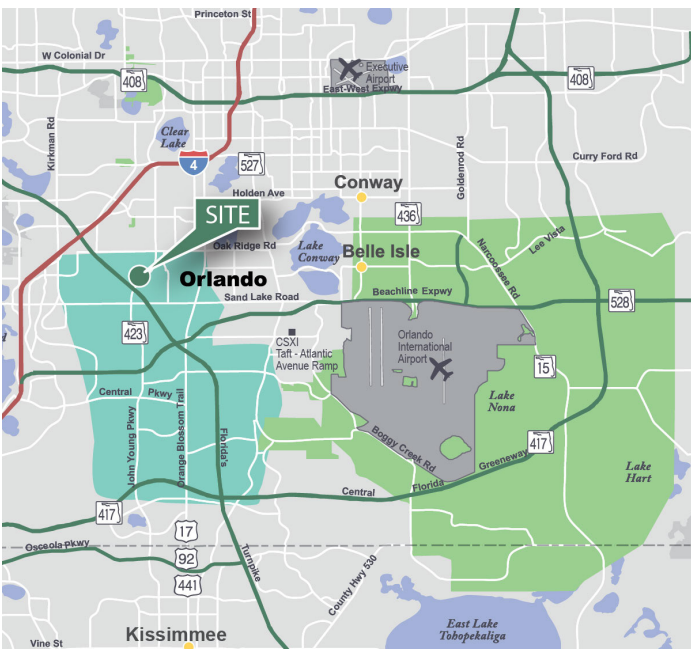
Up to 33,284 SF

Industrial Space For Lease



Prologis Orlando Central Park

2105-2193 Viscount Row
Orlando, FL 32809 USA



LOCATION

- Immediate access to John Young Parkway, Orange Blossom Trail (US 441) and Sand Lake Road
- Easy access to the Beachline Expressway (SR 528), Florida's Turnpike and Interstate 4 (I-4)

FACILITY

- 114,846 SF building
- Built in 1975
- Front loading
- 20' clear height
- 155' building depth
- 40' x 30' column spacing (typical)
- 99' truck court
- .18 / 1,000 SF parking

SUITE 2125

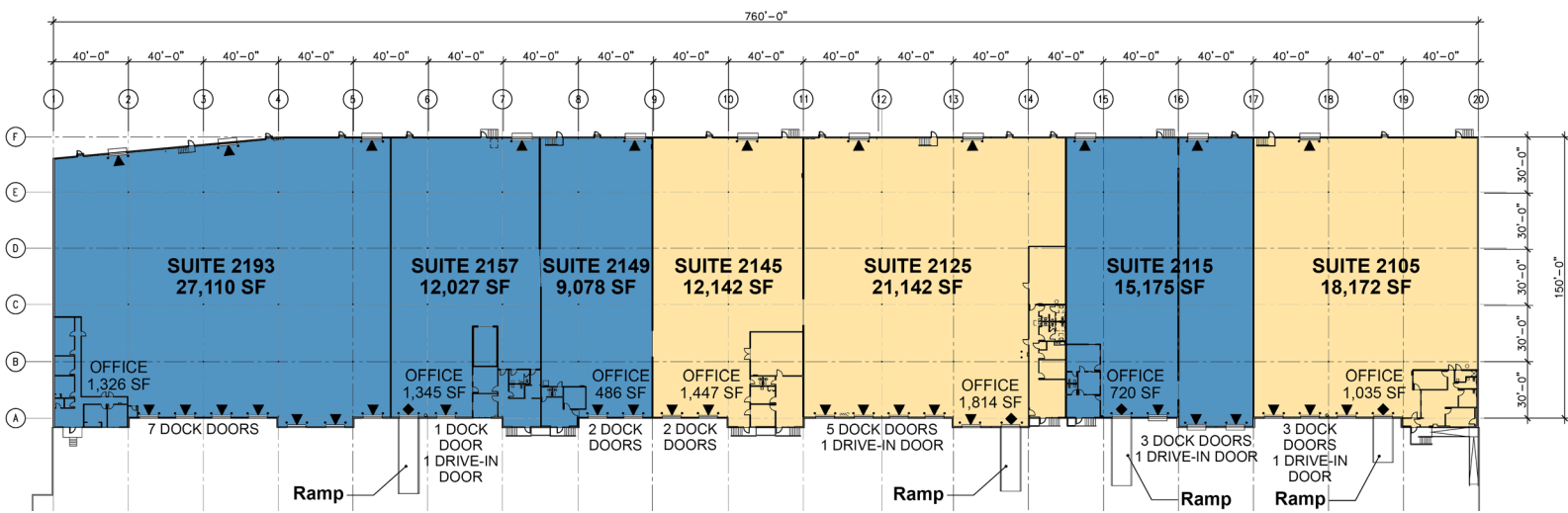
- 21,142 SF available
- 1,814 SF of office
- Five dock doors
- One drive-in door
- Two rail doors

SUITE 2145

- 12,142 SF available
- 1,447 SF of office
- Two dock doors
- One rail door

Up to 33,284 SF

Industrial Space For Lease

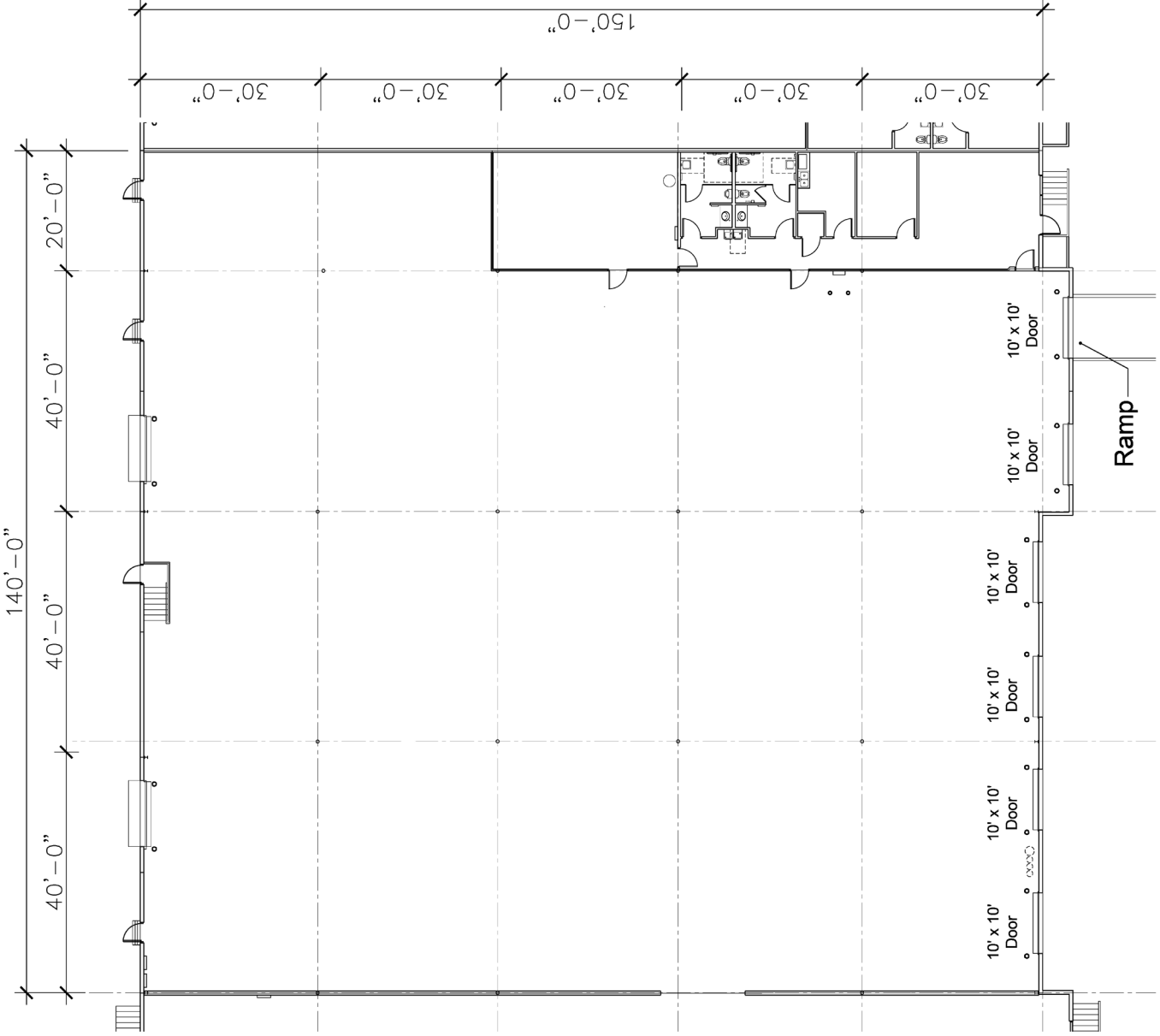


LEGEND

- AVAILABLE
- LEASED
- DOCK DOOR
- DRIVE-IN DOOR

Prologis Orlando Central Park
 2125 Viscount Row
 Orlando, FL 32809 USA

OFFICE:	1,814 SF
WAREHOUSE:	19,328 SF
TOTAL:	21,142 SF
DOCK DOORS:	5
DRIVE-IN DOOR:	1
RAIL DOORS:	2



Prologis Orlando Central Park
 2145 Viscount Row
 Orlando, FL 32809 USA

OFFICE: 1,447 SF
 WAREHOUSE: 10,695 SF
 TOTAL: 12,142 SF

DOCK DOORS: 2

RAIL DOOR: 1

