

FOR SALE OR LEASE

1430 South Main Street  
Salt Lake City, UT



## 18,422 SF / 0.84 ACRES

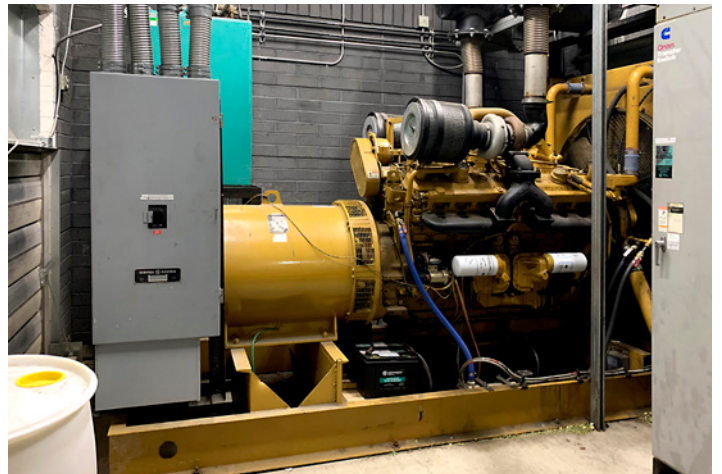
### Property Highlights

- Sales Price: \$2,900,000
- Lease Price: \$18 PSF Full Service
- Building Size: 18,422 SF
- Acres: 0.84
- Zoning: Commercial Corridor
- Sale leaseback possible
- Rare free standing building
- Top of the line, water cooled, server room with seismic upgrades
- Two backup generators
- Secured parking
- Potential for rooftop patio



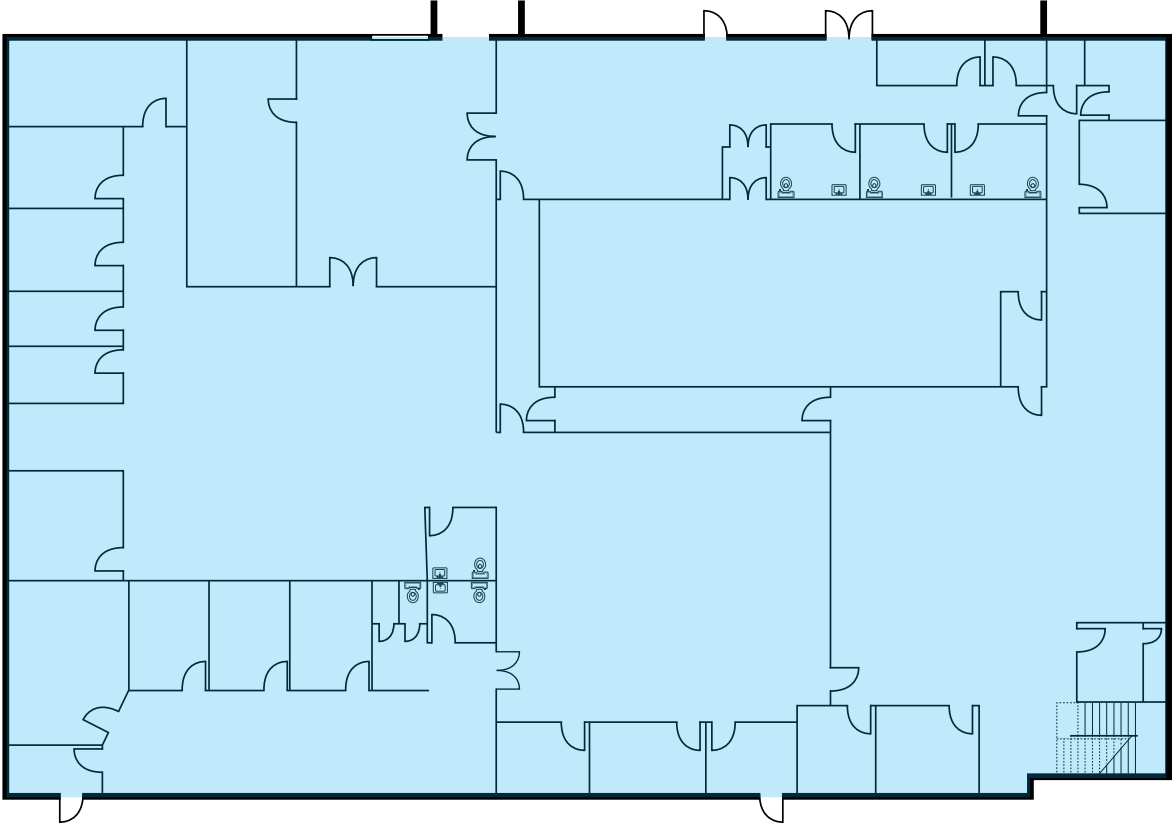


**FOR LEASE**  
1430 South Main St. | Salt Lake City, UT

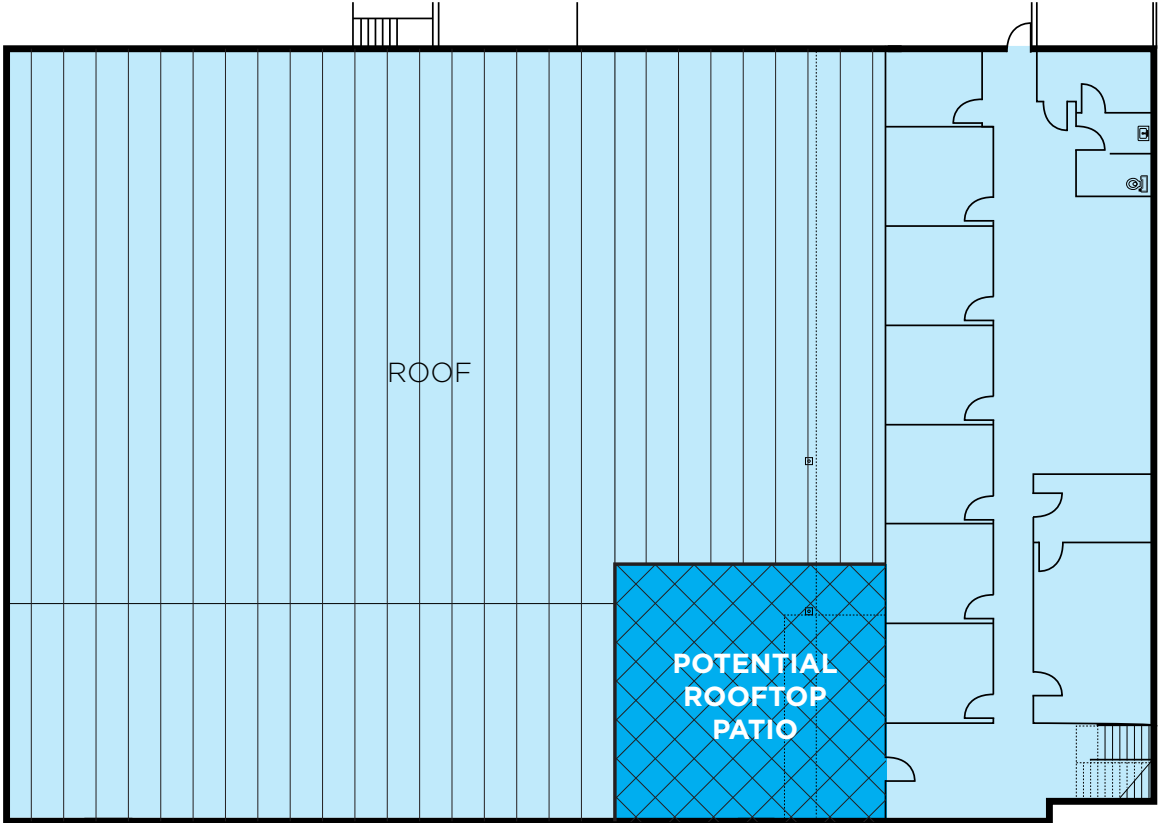


# Floor Plans

Lower Level



Upper Level





# Aerial / Location Map

