

FOR LEASE - 6,085 SF

DFW AIR FREIGHT CENTER

1200 TEXAN TRAIL, SUITE 310, GRAPEVINE, TX 76051



LOCATION DATA

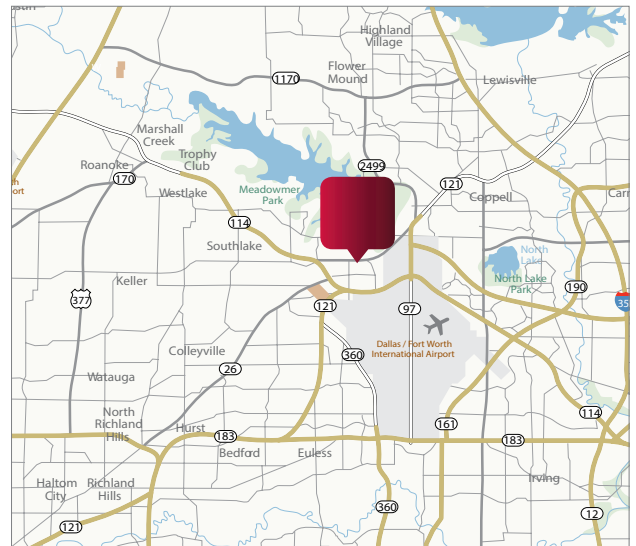
COUNTY: Tarrant
SUB-MARKET: W. DFW Air/ Grapevine Ind
SUBMARKET CLUSTER: DFW Airport Ind

BUILDING DATA

AVAILABLE SF: 6,085
OFFICE SF: 2,567
WAREHOUSE SF: 3,518
CLEAR HEIGHT: 16'
COLUMN SPACING: 30x30'
LOADING CROSS DOCK: 4 Dock High Doors
1 Ramp

ECONOMIC DATA

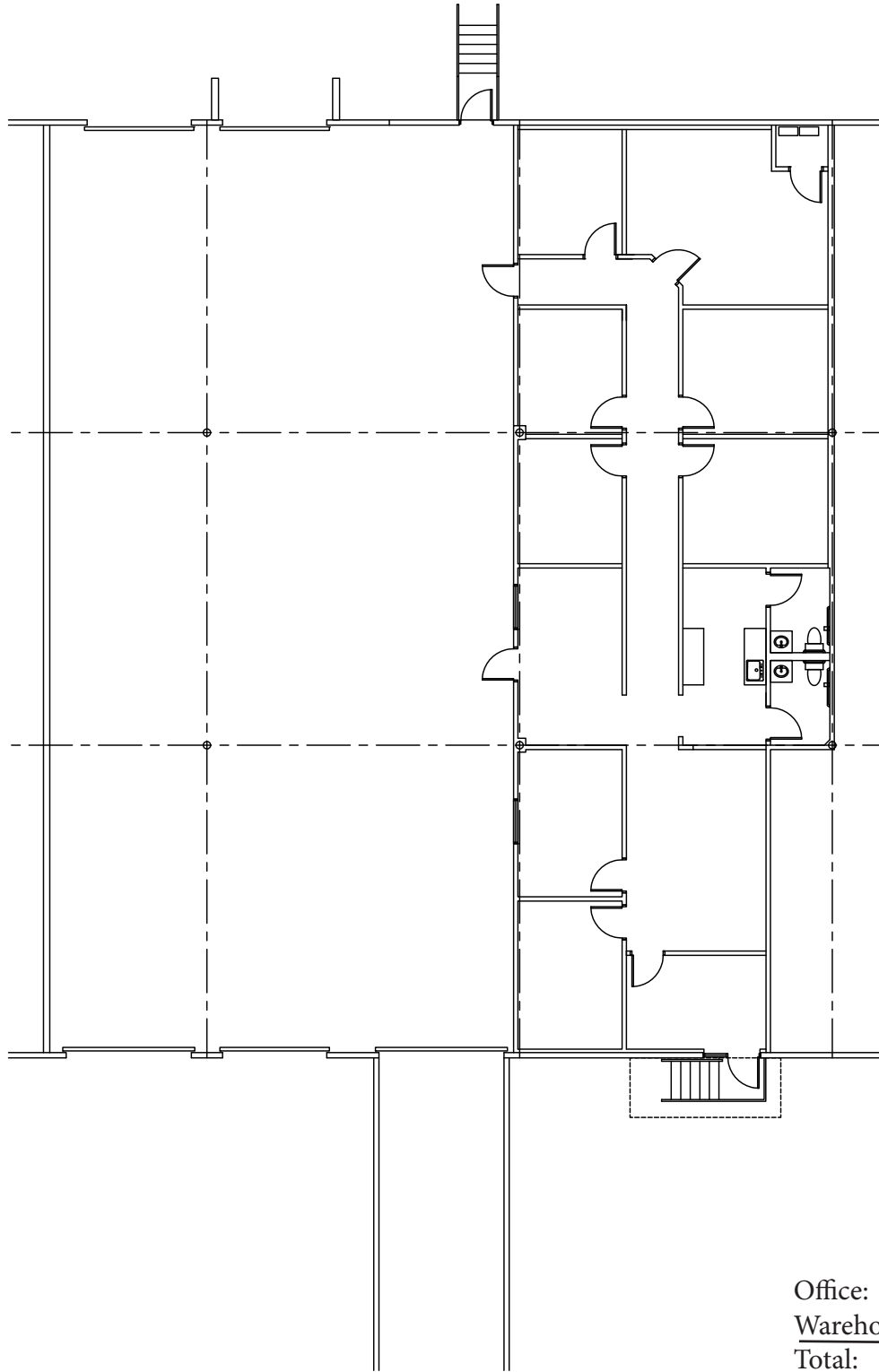
LEASE RATE: \$8.50 IG
Available 4/1/2019



FOR LEASE - 6,085 SF

DFW AIR FREIGHT CENTER

1200 TEXAN TRAIL, SUITE 310, GRAPEVINE, TX 76051



Office:	2,567 SF
Warehouse:	3,518 SF
Total:	<u>6,085 SF</u>

FOR LEASE - 7,350 SF

AIR FREIGHT I

1220 TEXAN TRAIL, SUITE 220, GRAPEVINE, TX 76051



LOCATION DATA

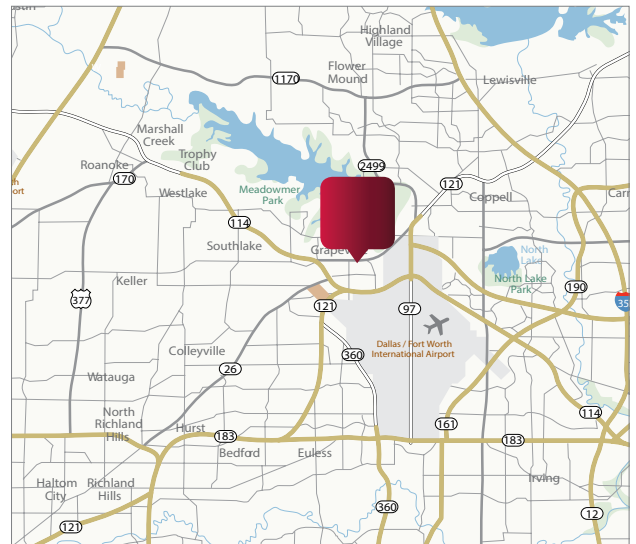
COUNTY: Tarrant
SUB-MARKET: W. DFW Air/ Grapevine Ind
SUBMARKET CLUSTER: DFW Airport Ind

BUILDING DATA

AVAILABLE SF: 7,350 SF
PROPOSED OFFICE SF: 1,202 SF
PROPOSED WAREHOUSE SF: 6,148 SF
CLEAR HEIGHT: 16'
COLUMN SPACING: 30x35'
LOADING CROSS DOCK: 7 Dock High Doors
1 Ramp

ECONOMIC DATA

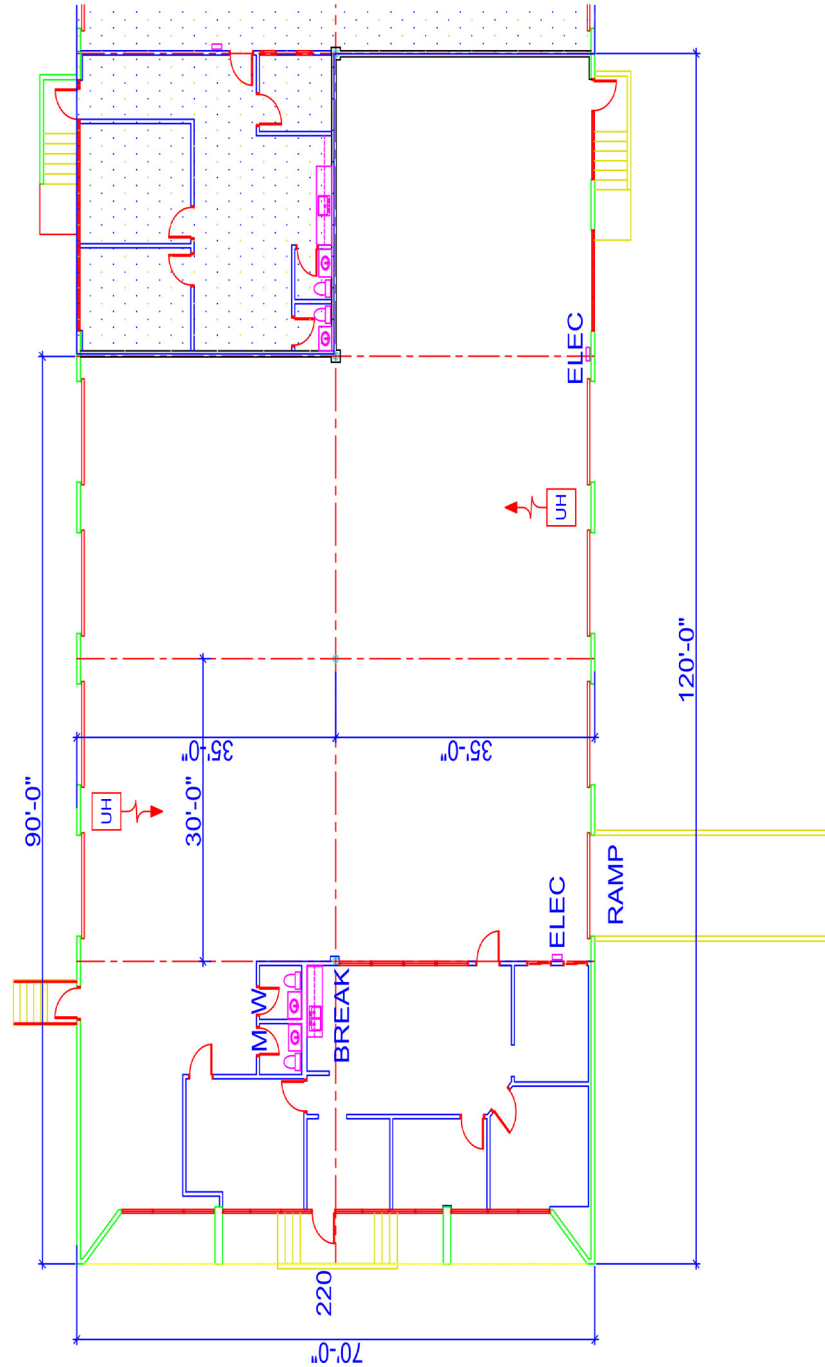
LEASE RATE: \$9.00 IG



FOR LEASE - 7,350 SF

AIR FREIGHT I

1220 TEXAN TRAIL, SUITE 220 GRAPEVINE, TX 76051



Proposed

Office: 1,202 SF

Warehouse: 6,148 SF

Total: 7,350 SF