

3100 McKinnon Street, Suite 400  
Dallas, Texas 75201

Industrial

# FOR LEASE

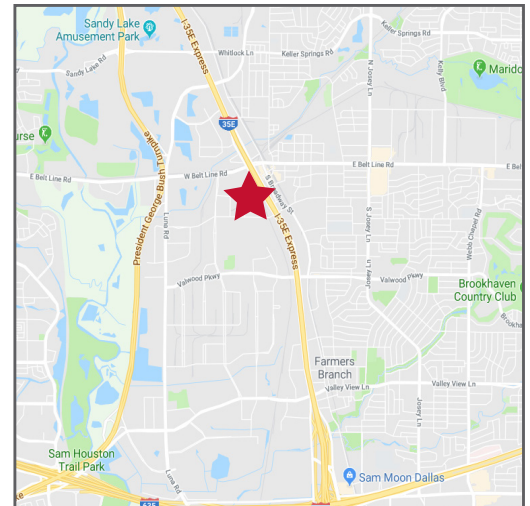
From 4,300 - 13,500 sf

1208 - 1216 Tappan Circle  
Carrollton, Texas 75006



## Features

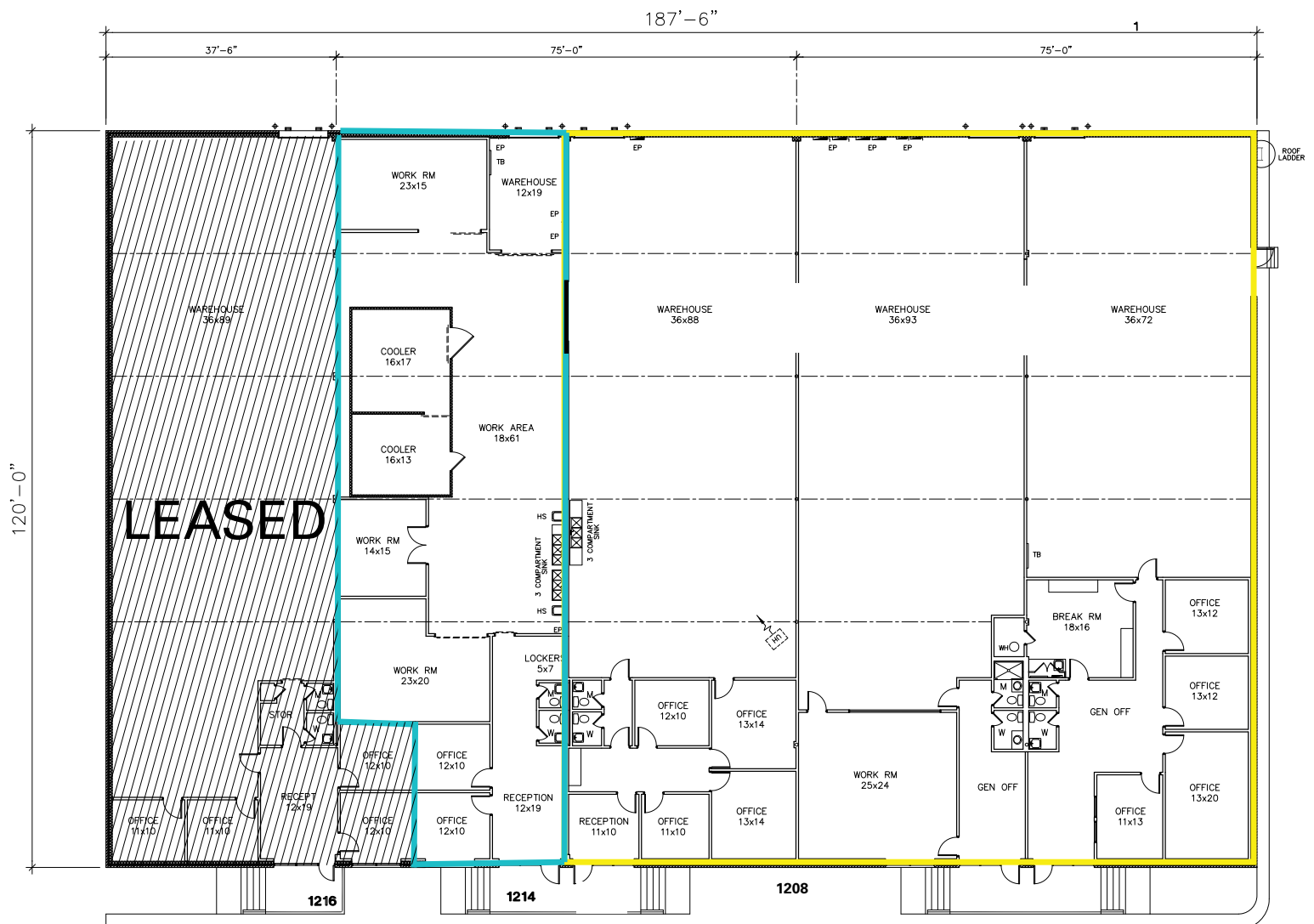
- Suite 1208: 13,500 SF  
Suite 1214: 4,300 SF
- 12' - 16' Clear height
- Dock high loading
- Walkable to Downtown Carrollton
- Located in desirable Valwood area
- Near I-635, I-35, and President George Bush Tollway



# FOR LEASE

**1208 - 1216 Tappan Circle**  
Carrollton, Texas 75006

## Industrial



1214

OFFICE	1,708 SF
WAREHOUSE	2,592 SF
TOTAL	4,300 SF

## 1208

OFFICE	+/- 3,000 SF
WAREHOUSE	+/- 9,000 SF
TOTAL	13,500 SF



# FOR LEASE

**1208 - 1216 Tappan Circle**  
Carrollton, Texas 75006

## Industrial

